



Department
for Education

Risk Protection Arrangement

Cyber Response Plan

Initio Learning Trust

Last Reviewed	1 May 2024
Reviewed By	RBOWELL/SJONES/TBROADBENT
Next Review Date	30 April 2027

Contents

1. Introduction.....	3
2. Aims of a Cyber Response Plan.....	3
3. Risk Protection Arrangement Cover.....	4
4. Preparation and Additional Resources.....	6
5. Actions in the event of an incident.....	8
6. Cyber Recovery Plan.....	9
Appendix A: Incident Impact Assessment.....	15
Appendix B: Communication Templates.....	18
Appendix C: Incident Recovery Event Recording Form.....	22
Appendix D: Post Incident Evaluation.....	23

1 Introduction

A Cyber Response Plan should be considered as part of an overall continuity plan that schools need to ensure they maintain a minimum level of functionality to safeguard pupils and staff and to restore the school back to an operational standard.

If a school fails to plan effectively then recovery can be severely impacted, causing additional loss of data, time, and ultimately, reputation.

Incidents may occur during the school day or out of hours. The Cyber Response Plan should be tested, with input from key stakeholders, to ensure that in an emergency there is a clear strategy, which has fail-safes when key personnel are unavailable.

The plan should cover all essential and critical IT infrastructure, systems, and networks. The plan will ensure that communications can be quickly established whilst activating cyber recovery. It is also important that the plan is well communicated and readily available.

The document is to ensure that in the event of a cyber attack, school staff will have a clear understanding of who should be contacted, and the actions necessary to minimise disruption.

2. Aims of a Cyber Response Plan

When developing a Cyber Response Plan, you will need to consider who will be involved in the Cyber Recovery Team, the key roles and responsibilities of staff, what data assets are critical and how long you would be able to function without each one, establish plans for internal and external communications and have thought about how you would access registers and staff and pupil contact details. This will allow the school:

- To ensure immediate and appropriate action is taken in the event of an IT incident.
- To enable prompt internal reporting and recording of incidents.
- To have immediate access to all relevant contact details (including backup services and IT technical support staff).
- To maintain the welfare of pupils and staff.
- To minimise disruption to the functioning of the school.
- To ensure that the school responds in a consistent and effective manner in order to reduce confusion and reactivity.
- To restore functionality as soon as possible to the areas which are affected and maintain normality in areas of the school which are unaffected.

3. Risk Protection Arrangement Cover

From April 2022, the [Risk Protection Arrangement](#) (RPA) will include cover for Cyber Incidents, which is defined in the RPA Membership Rules as:

“Any actual or suspected unauthorised access to any computer, other computing and electronic equipment linked to computer hardware, electronic data processing equipment, microchips or computer installation that processes, stores, transmits, retrieves or receives data.”

Your RPA cover includes a 24/7 dedicated helpline and dedicated email address. In the event of a Cyber Incident, you must contact the [RPA Emergency Assistance](#).

To be eligible for RPA Cyber cover, there are 4 conditions that members must meet:

1. Have offline backups. [Help and guidance on backing up](#) is available from the National Cyber Security Centre (NCSC) and should ideally follow the 3-2-1 rule explained in the NCSC blog [Offline backups in an online world - NCSC.GOV.UK](#)

It is vital that all education providers take the necessary steps to protect their networks from cyber-attacks and have the ability to restore systems and recover data from backups. Education providers should ask their IT teams or external IT providers to ensure the following:

- a) Backing up the right data. Ensuring the right data is backed up is paramount. See [Critical Activities](#) for a suggested list of data to include.
- b) Backups are held fully offline and not connected to systems or in cold storage, ideally following the 3-2-1 rule explained in the NCSC blog [Offline backups in an online world](https://www.ncsc.gov.uk/blog-post/offline-backups-in-an-online-world): <https://www.ncsc.gov.uk/blog-post/offline-backups-in-an-online-world>
- c) Backups are tested appropriately, not only should backups be done regularly but need to be tested to ensure that services can be restored, and data recovered from backups.

Further Help and guidance on backing up can be found at: Step 1 - Backing up your data - NCSC.GOV.UK.

<https://www.ncsc.gov.uk/collection/small-businessguide/backing-your-data>

2. All Employees or Governors who have access to the Member's information technology system must undertake [NCSC Cyber Security Training](#) by the 31 May 2022 or the start of the Membership Year, whichever is later. Upon completion, a certificate can be downloaded by each person. In the event of a claim the Member will be required to provide this evidence.
3. Register with [Police CyberAlarm](#). Registering will connect Members with their local police cyber protect team and in the majority of cases, a cyber-alarm software tool can

be installed for free to monitor cyber activity. Where installed the tool will record traffic on the network without risk to personal data. When registering, use the code “RPA Member” in the Signup code box.

4. Have a Cyber Response Plan in place. This template is for you to use to draft a Trust specific plan if you do not already have one. It can be downloaded from the [RPA members portal](#).

For full terms and conditions of Cyber cover, please refer to the relevant [Membership Rules](#) on gov.uk.

4. Preparation and Additional Resources

Preventative Strategies

It is vital education providers regularly review their existing defences and take the necessary steps to protect their networks. In addition to the 4 conditions of cover detailed above, there are several suggested measures that schools can implement to help themselves to improve their IT security and mitigate the risk of a cyber-attack:

- Regularly review IT Security Policy and Data Protection Policy.
- Assess the school's current security measures against [Cyber Essentials](#) requirements, such as firewall rules, malware protection, and role based user access. Cyber Essentials is a government-backed baseline standard, which we would encourage all RPA members to strive towards achieving wherever possible.
- Ensure Multi-Factor Authentication (MFA) is in place: A method of confirming a user's identity by using a combination of two or more different factors.
- Implement a regular patching regime: Routinely install security and system updates and a regular patching regime to ensure any internet-facing device is not susceptible to an exploit. This includes Exchange servers, web servers, SQL servers, VPN devices and Firewall devices. Ensure that security patches are checked for and applied on a regular basis. Vulnerabilities within Microsoft Exchange Servers have been the root cause of many cyber-attacks in the last six months. It is highly recommended that on-premises exchange servers are reviewed and patched/updated as a high priority and moving to an Office 365 environment with MFA if possible.
- Enable and review Remote Device Protocols (RDP) access policies: The use of external RDP access to a device is not recommended and allows attackers to brute-force access to any device that is externally accessible. Mitigating measures are:
 - If external RDP connections are used, MFA should be used
 - Restricting access via the firewall to RDP enabled machines to allow only those who are allowed to connect
 - Enable an account lockout policy for failed attempts
 - The use of a VPN tunnel to access a network in the first instance, and then allowing users to subsequently use RDP or RDS to access a device afterwards is highly recommended
- Review NCSC advice regarding measures for IT teams to implement: [Mitigating malware and ransomware attacks - NCSC.GOV.UK](#)
- Provide awareness training for staff to recognise, report, and appropriately respond to security messages and/or suspicious activities.

Advice and guidance

- The NCSC website has an extensive range of practical resources to help improve [Cyber Security for Schools - NCSC.GOV.UK](#)

Acceptable Use

Ensure all users have read the relevant policies for school devices.

Communicating the Plan

Communicate the Cyber Recovery Plan to all those who are likely to be affected and be sure to inform key staff of their roles and responsibilities in the event of an incident, prior to any issue arising.

Testing and Review

During an incident there can be many actions to complete, and each step should be well thought out, cohesive, and ordered logically.

Train key staff members to feel confident following and implementing the plan. Review the plan regularly to ensure contact details are up-to-date and new systems have been included. NCSC have resources to test your incident response with an [Exercise in a Box - NCSC.GOV.UK](#)

Making Templates Readily Available

It is recommended that templates are available to cover reporting, recording, logging incidents and actions, and communicating to stakeholders.

5. Actions in the event of an incident

If you suspect you have been the victim of a ransomware or other cyber incident, you should take the following steps immediately:

- Enact your [Cyber Recovery Plan](#)
- Contact the 24/7/365 RPA Cyber Emergency Assistance:
 - By telephone: **0800 368 6378** or by email: RPAresponse@CyberClan.com
 - You will receive a guaranteed response within 15 minutes
 - Incident information will be recorded, advice will be provided and any critical ongoing incidents will be contained where possible
 - Subject to the claim being determined as valid, an expert Incident Response team will be deployed to rapidly respond to the incident, providing Incident Response services including: forensic investigation services and support in bringing IT operations securely back up and running.
- Inform the National Cyber Security Centre (NCSC) - <https://report.ncsc.gov.uk>
- Contact your local police via Action Fraud [Action Fraud website](#) or call **0300 123 2040**
- If you are a part of a Local Authority (LA), they should be contacted
- Contact your Data Protection Officer
- Consider whether reporting to the [ICO is necessary](#) report at www.ico.org.uk **0303 123 1112**
- Contact the Sector Security Enquiries Team at the Department for Education by emailing: sector.securityenquiries@education.gov.uk

Please be aware that speed is of critical importance during a cyber incident to help protect and recover any systems that may have been affected and help prevent further spread.

6. Cyber Recovery Plan

1. Verify the initial incident report as genuine and record on the [Incident Recovery Event Recording Form](#) at Appendix C.
2. Assess and document the scope of the incident using the [Incident Impact Assessment](#) at Appendix A to identify which key functions are operational / which are affected.
3. In the event of a suspected cyber-attack, IT staff should isolate devices from the network.
4. In order to assist data recovery, if damage to a computer or back up material is suspected, staff **should not**:
 - Turn off electrical power to any computer.
 - Try to run any hard drive, back up disc or tape to try to retrieve data.
 - Tamper with or move damaged computers, discs or tapes.
5. Contact [RPA Emergency Assistance Helpline](#).
6. Start the [Actions Log](#) to record recovery steps and monitor progress.
7. Convene the [Cyber Recovery Team](#) (CRT).
8. Liaise with IT staff to estimate the recovery time and likely impact.
9. Decide as to the safety of the school remaining open.
 - *This will be in liaison with relevant Local Authority Support Services / Trust*
10. Identify legal obligations and any required statutory reporting e.g., criminal acts / reports to the Information Commissioner's Office in the event of a data breach.
 - *This may involve the school's Data Protection Officer and the police*
11. Execute the [communication](#) strategy which should include a media / press release if applicable.
 - *Communications with staff, governors and parents / pupils should follow in that order, prior to the media release.*
12. Make adjustments to recovery timescales as time progresses and keep stakeholders informed.
13. Upon completion of the process, evaluate the effectiveness of the response using the [Post Incident Evaluation](#) at Appendix D and review the Cyber Recovery Plan accordingly.
14. Educate employees on avoiding similar incidents / implement lessons learned.

Ensure this plan is kept up-to-date with new suppliers, new contact details, and changes to policy.

The following sections should be completed to produce a bespoke Cyber Recovery Plan for your school:

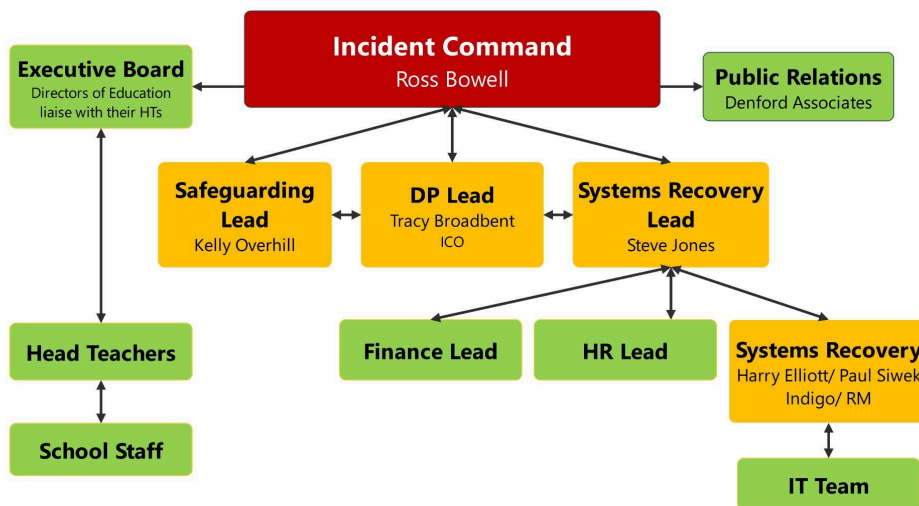
Cyber Recovery Team

In the event of this plan having to be initiated, the personnel named below will form the Cyber Recovery Team and take control of the following:

	Name	Role in School	Contact Details
Recovery Team Leader	Ross Bowell	Director of Resources	07912497684
Systems Recovery Lead	Steve Jones	Resources Manager	07596042450
IT Restore / Recover	Harry Elliott Indigo IS Paul Siwek RM	ICT Support Manager Managed Service Provider Senior IT Support (west) Network Provider (west)	07818 707074 01202 535000 01308 426291 0845 404 0000
Public Relations	Amy Leonard	Denford Associates - PR Agency	07960 116966
Communications	Ross Bowell	Director of Resources	07912497684
Safeguarding	Kelly Overhill	Trust Safeguarding Officer	07912497713
Data Protection	Tracy Broadbent	Data Protection Officer	07761045361



Cyber Response Communication



Server Access

Please detail all the people with administrative access to the server.

Role	Name	Contact Details
Managed Service Provider	Indigo Integrated Solutions	01202 535000
Resources Manager	Steve Jones	07596042450
ICT Support Manager	Harry Elliott	07818 707074
ICT Senior Technician	Paul Siwek	01308 426129
IT Technician	Katherine Wellman	01308 426129

Management Information System (MIS) Admin Access

Please detail all the people with administrative access to the MIS

MIS Admin Access	Name	Contact Details
MIS Provider	SCOMIS (Devon County Council) Bromcom	01392 385300 020 8290 7177
ICT Support Manager	Harry Elliott	07818 707074
ICT Senior Technician	Paul Siwek	01308 426129

In the event of a cyber incident, it may be helpful to consider how you would access the following:

- Registers
- Staff / Pupil contact details
- Current Child Protection Concerns

Backup Strategy

School Process	Backup Type (include on-site / off-site)	Frequency
Network Servers	Indigo IS – off-site	At least daily
SIMS	SCOMIS – off-site	At least daily
Google Workspace	Google and Indigo IS – off-site	At least daily
Third Party Applications / Software	Various – off-site	At least daily
Finance / Purchasing	Xero for Schools – off-site	At least daily
Payroll Records	Dorset Council – off-site	At least daily
Facilities Management / Inventory	Halo – off-site	At least daily
Website	E4Education – off-site	At least daily
Safeguarding	MyConcern – off-site	At least daily
Microsoft O365	off-site	At least daily
Bromcom	MIS - off-site	At least daily

Key Contacts

	Supplier
Internet Connection	Indigo IS (east) RM (west)
Backup Provider	Indigo IS (east) Synology (west)
Telecom Provider	Wavenet/Indigo IS/O2 Intech (west)
Website Host	E4Education
Electricity Supplier	EDF/Npower
Legal Representative	Browne Jacobson
LA / Trust Press Officer	Denford Associates

This procedure should not be published with contact details included due to the risk of a data breach.

Staff Media Contact

Assigned staff will co-ordinate with the media, working to guidelines that have been previously approved for dealing with post-disaster communications.

The staff media contact should only provide verified facts. It is likely that verifying details will take some time and stating, "I don't know at this stage", is a perfectly acceptable response.

It is likely the following basic questions will form the basis of information requests:

- What happened?
- How did it happen?
- What are you going to do about it?

Staff who have not been delegated responsibility for media communications **should not respond** to requests for information and should refer callers or media representatives to assigned staff.

Assigned Media Liaison(s):

Amy Leonard

Denford Associates

amy.leonard@denford-associates.com

07960 116966

Key Roles and Responsibilities

Every trust is unique and the structure and staffing levels will determine who will be assigned which task. This example will help you assign roles and responsibilities, but this is not an exhaustive or a definitive list.

Director of Resources

- Supports the Resources Manager throughout the process and ensure decisions are based on sound judgement and relevant advice.
- Understands there may be a need to make additional funds available – have a process to approve this.
- Ensures all Trustees and Academy Committee Members are aware of the situation and are advised not to comment to third parties / the media.
- Reviews the response after the incident to consider changes to working practices or school policy.

Resources Manager

- Seeks clarification from person notifying incident.
- Sets up and maintains an incident log, including dates / times and actions.
- Convenes the Cyber Recovery Team (CRT) to inform of incident and enact the plan.
- Liaises with the CEO/Chair of Trustees.
- Liaises with the Data Protection Officer.
- Convenes and informs staff, advising them to follow the 'script' when discussing the incident.
- Prepares relevant statements / letters for the media, parents / pupils.
- Liaises with school office leads to contact parents, if required, as necessary
- Contacts relevant external agencies – RPA Emergency Assistance / IT services / technical support staff
- Assesses whether payroll or HR functions are affected and considers if additional support is required.

Data Protection Officer (DPO)

- Supports the Trust, using the data map and information asset register to consider whether data has been put at risk, is beyond reach, or lost.
- Determines if a report to the ICO is necessary.
- Advises on the appropriateness of any plans for temporary access / systems.

Cyber recovery team

- Verifies the most recent and successful backup.
- Liaises with the RPA Incident Response Service to assess whether the backup can be restored or if server(s) themselves are damaged, restores the backup and advises of the backup date and time to inform stakeholders as to potential data loss.
- Liaises with the CEO as to the likely cost of repair / restore / required hardware purchase.
- Provides an estimate of any downtime and advises which systems are affected / unaffected.
- If necessary, arranges for access to the off-site backup.
- Protects any records which have not been affected.
- Ensures on-going access to unaffected records.

Trust Safeguarding Officer (with support from school DSLs)

- Seeks clarification as to whether there is a safeguarding aspect to the incident.
- Considers whether a referral to Cyber Protect Officers / Early Help / Social Services is required.

Site Managers

- Ensures site access for external IT staff.
- Liaises with the Cyber recovery team to ensure access is limited to essential personnel.

School Office leads

- Ensures phone lines are operative and makes mobiles available, if necessary – effectively communicating numbers to relevant staff.
- Ensures office staff understand the [standard response](#) and knows who the media contact within school is.
- Manages the communications, website / texts to parents / school emails

Teaching Staff and Teaching Assistants

- Reassures pupils, staying within agreed pupil standard response
- Records any relevant information which pupils may provide.
- Ensures any temporary procedures for data storage / IT access are followed

Critical Activities - Data Assets

List all the data assets your school has access to and decide which are critical and how long you would be able to function without each one. This could be a matter of a few hours or a matter of a day, a week or even a month.

Complete the required column with the timescale you believe is necessary for recovery. You may find it helpful to refer to your Inventory / Data Map.

Assign: 4 hours / 24 hours / 72 hours / 1 week / 1 month

Also decide if there are any temporary workarounds or if outsourcing is possible. It is useful to consider the cost of any additional resources which may be required in an emergency situation.

Critical Activities	Data item required for service continuity	When required?
Leadership and Management	Minutes of SLT meetings and agendas	1 month
	Head's reports to governors (past and present)	1 month
	Key stage, departmental and class information	1 month
Safeguarding / Welfare	Access to systems which report and record safeguarding concerns	24 hours
	Attendance registers	24 hours
	Class groups / teaching groups, and staff timetables	24 hours
	Referral information / outside agency / TAFs	24 hours
	Child protection records	24 hours
	Looked After Children (LAC) records / PEPs	24 hours
	Pupil Premium pupils and funding allocations	24 hours
Pastoral records and welfare information	24 hours	
Medical	Access to medical conditions information	24 hours
	Administration of Medicines Record	24 hours
	First Aid / Accident Logs	24 hours
Teaching	Schemes of work, lesson plans and objectives	24 hours
	Seating plans	24 hours
	Teaching resources, such as worksheets	24 hours
	Learning platform / online homework platform	24 hours
	Curriculum learning apps and online resources	24 hours
	CPD / staff training records	24 hours
	Pupil reports and parental communications	24 hours
SEND Data	SEND List and records of provision	24 hours
	Accessibility tools	24 hours
	Access arrangements and adjustments	24 hours
	IEPs / EHCPs / GRIPS	24 hours

Critical Activities	Data item required for service continuity	When required?
Conduct and Behaviour	Reward system records, including house points or conduct points	24 hours
	Behaviour system records, including negative behaviour points	24 hours
	Sanctions	24 hours
	Exclusion records, past and current	24 hours
	Behavioural observations / staff notes and incident records	24 hours
Assessment and Exams	Exam entries and controlled assessments	1 week
	Targets, assessment and tracking data	1 week
	Baseline and prior attainment records	1 week
	Exam timetables and cover provision	1 week
	Exam results	1 week
Governance	School development plans	1 month
	Policies and procedures	24 hours
	Governors meeting dates / calendar	1 month
	Governor attendance and training records	1 month
	Governors minutes and agendas	1 month
Administration	Admissions information	1 week
	School to school transfers	1 week
	Transition information	1 week
	Contact details of pupils and parents	4 hours
	Access to absence reporting systems	1 week
	School diary of appointments / meetings	24 hours
	Pupil timetables	4 hours
	Letters to parents / newsletters	1 month
	Extra-curricular activity timetable and contacts for providers	1 week
	Census records and statutory return data	1 month
Human Resources	Payroll systems	1 week
	Staff attendance, absences, and reporting facilities	1 week
	Disciplinary / grievance records	1 week
	Staff timetables and any cover arrangements	24 hours
	Contact details of staff	4 hours
Office	Photocopying / printing provision	24 hours
	Telecoms - school phones and access to answerphone messages	24 hours
	Email - access to school email systems	24 hours
	School website and any website chat functions / contact forms	1 week
	Social media accounts (Facebook / Twitter)	1 month
	Management Information System (MIS)	24 hours
	School messaging system	24 hours
	School payments system (for parents)	24 hours
	Financial Management System - access for orders / purchases	1 week
Site	Visitor sign in / sign out	24 hours
	CCTV access	24 hours
	Site maps	24 hours
	Maintenance logs, including legionella and fire records	24 hours
	Risk assessments and risk management systems	24 hours
	COSHH register and asbestos register	1 week

Appendix A: Incident Impact Assessment

Use this table to assess and document the scope of the incident to identify which key functions are operational / which are affected:

Operational	No Impact	There is no noticeable impact on the school's ability to function.
	Minor Impact	There is some loss in the ability to function which is minor. Functions can be carried out, but may take longer and there is a loss of efficiency.
	Medium Impact	The school has lost the ability to provide some critical services (administration or teaching and learning) to some users. The loss of functionality is noticeable, but work arounds are possible with planning and additional resource.
	High Impact	The school can no longer provide any critical services to users. It is likely the school will close or disruption will be considerable.

Informational	No Breach	No information has been accessed / compromised or lost.
	Data Breach	Access or loss of data which is not linked to individuals and classed as personal. This may include school action plans, lesson planning, policies and meeting notes.
	Personal Data Breach	Sensitive personally identifiable data has been accessed or extracted. Data which may cause 'significant impact' to the person / people concerned requires a report to the ICO within 72 hours.
	Integrity Loss	Data, which may include sensitive personal data, has been changed or deleted. (This also includes corruption of data)

Restoration	Existing Resources	Recovery can be promptly facilitated with the resources which are readily available to the school.
	Facilitated by Additional Resources	Recovery can be facilitated within an identified timescale with additional resources which can be easily accessed.
	Third Party Services	Recovery is not guaranteed, and outside services are required to facilitate full or partial restoration.
	Not Recoverable	Recovery from the incident is not possible. Data may have been extracted, encrypted or backups may have failed.

Appendix B: Communication Templates

1. School Open

Dear Parent/Carer,

I am writing to inform you that it appears the school has been a victim of [a cyber-attack / serious system outage]. This has taken down [some / all] of the school IT systems. This means that we currently do not have any access to [telephones / emails / server / MIS etc] At present we have no indication of how long it will take to restore our systems. [OR it is anticipated it may take XXXX to restore these systems]

We are in liaison with our school Data Protection Officer and, if required, this data breach will be reported to the Information Commissioners Office (ICO) in line with requirements of the Data Protection Act 2018 / GDPR. Every action has been taken to minimise disruption and data loss.

The school will be working with the [Trust / Local Authority], IT providers and other relevant third parties [Department for Education / NCSC / local police constabulary] to restore functionality and normal working as soon as possible.

In consultation with the [Trust / Local Authority] we have completed a risk assessment on all areas affected to address concerns surrounding the safeguarding of our pupils and staff. The school will remain open with the following changes [detail any changes required]

I appreciate that this will cause some problems for parents/carers with regards to school communications and apologise for any inconvenience.

We will continue to assess the situation and update parents/carers as necessary. [If possible, inform how you will update i.e. via website/text message]

Yours sincerely,

2. School Closure

Dear Parent/Carer,

I am writing to inform you that it appears the school has been a victim of [a cyber-attack / serious system outage]. This has taken down the school IT system. This means that we currently do not have any access to [telephones / emails / server / MIS etc]. At present we have no indication of how long it will take to restore our systems.

We are in liaison with our school Data Protection Officer and this data breach has been reported to the Information Commissioners Office (ICO) in line with the requirements of the Data Protection Act 2018 / GDPR.

In consultation with the [Trust / Local Authority] we have completed a risk assessment on all areas affected to address concerns surrounding the safeguarding of our pupils and staff.

I feel that we have no option other than to close the school to students on [XXXXXXXXXXXX]. We are currently planning that the school will be open as normal on [XXXXXXXXXXXX]

I appreciate that this will cause some problems for parents/carers with regards to childcare arrangements and apologise for any inconvenience but feel that we have no option other than to take this course of action.

The school will be working with the [Trust / Local Authority], IT providers and other relevant third parties [Department for Education / NCSC / local police constabulary] to restore functionality and re-open as soon as possible.

We will continue to assess the situation and update parents / carers as necessary. [If possible, inform how you will update i.e. via website / text message].

Yours sincerely,

3. Staff Statement Open

The school detected a cyber-attack on [date] which has affected the following school IT systems:

(Provide a description of the services affected)

Following liaison with the [Trust / LA] the school will remain open with the following changes to working practice:

(Detail any workarounds / changes)

The school is in contact with our Data Protection Officer and will report to the ICO, if necessary, in line with statutory requirements of the Data Protection Act 2018 / GDPR.

This incident is being investigated by the relevant authorities. If you are asked for any information as part of the on-going investigation, please provide it promptly. The school has taken immediate action to mitigate data loss, limit severity, and restore systems.

All staff are reminded that they must not make any comment or statement to the press, parents or wider community with regards to this incident or its effects. Queries should be directed to [Insert staff name]

4. Staff Statement Closed

The school detected a cyber-attack on [date] which has affected the following school IT systems:

(Provide a description of the services affected)

Following liaison with the [Trust / LA] the school will close to pupils [on DATE or with immediate effect].

(Detail staff expectations and any workarounds / changes or remote learning provision)

The school is in contact with our Data Protection Officer, and we have reported the incident to the ICO, in line with the statutory requirements of the Data Protection Act 2018 / GDPR.

This incident is being investigated by the relevant authorities. If you are asked for any information as part of the on-going investigation, please provide it promptly. The school has taken immediate action to mitigate data loss, however we are unsure when systems will be restored. Staff will be kept informed via [telephone / email / staff noticeboard].

All staff are reminded that they must not make any comment or statement to the press, parents, or wider community with regards to this incident or its effects. Queries should be directed to [Insert staff name].

5. Media Statement (subject to review by Denford Associates)

[Inset school name] detected a cyber-attack on [date] which has affected the school IT systems. Following liaison with the [Trust / LA] the school [will remain open / is currently closed] to pupils.

The school is in contact with their Data Protection Officer and will report to the ICO, if necessary, in line with statutory requirements of the Data Protection Act 2018 / GDPR.

This incident is being investigated by the relevant authorities and the school has taken immediate remedial action to limit data loss and restore systems.

A standard staff response for serious IT incidents should reflect only information which is already freely available and has been provided by the school in initial media responses.

Standard Response

The information provided should be factual and include the time and date of the incident.

Staff should not speculate how long systems will take to be restored but can provide an estimate if this has been agreed.

If no restoration date has been advised, staff should merely state that work is on-going and that services will resume as soon as practically possible.

Staff should direct further enquiries to an assigned contact / school website / other pre-determined communication route.

Standard Response for Pupils

For staff responding to pupil requests for information, responses should reassure concerned pupils that incidents are well prepared for, alternative arrangements are in place and that systems will be back online shortly.

Staff should address any outlandish or suggested versions of events by reiterating the facts and advising pupils that this has been confirmed in letters / emails to parents / carers.

Staff should not speculate or provide pupils with any timescales for recovery, unless the sharing of timescales has been authorised by senior staff.

Appendix C: Incident Recovery Event Recording Form

This form can be used to record all key events completed whilst following the stages of the Cyber Response Plan.

Description or reference of incident:	
Date of the incident:	
Date of the incident report:	
Date/time incident recovery commenced:	
Date recovery work was completed:	
Was full recovery achieved?	

Relevant Referrals

Referral To	Contact Details	Contacted On (Time / Date)	Contacted By	Response

Actions Log

Recovery Tasks (In order of completion)	Person Responsible	Completion Date		Comments	Outcome
		Estimated	Actual		
1.					
2.					
3.					
4.					
5.					
6.					
7.					
8.					

Appendix D: Post Incident Evaluation

Response Grades 1-5 1 = Poor, ineffective and slow / 5 = Efficient, well communicated and effective.

Action	Response Grading	Comments for Improvements / Amendments
Initial Incident Notification		
Enactment of the Action plan		
Co-ordination of the Cyber Recovery Team		
Communications Strategy		
Impact minimisation		
Backup and restore processes		
Were contingency plans sufficient?		
Staff roles assigned and carried out correctly?		
Timescale for resolution / restore		
Was full recovery achieved?		
Log any requirements for additional training and suggested changes to policy / procedure:		