

Headteacher: Mr M. Legge BEd (Hons) NPQH  
Deputy Headteacher: Mr L. Smith BA (Hons)

## Headteacher Update

Dear Parents/Carers,

As we return from the half term break we have **much news to share from around our school**. The first half of the Autumn term was a real success. Children are **working very hard in lessons and taking part in the many opportunities on offer across our school**. Thank you for ensuring that your child **attends school looking very smart** with the **necessary equipment** to ensure that they can be successful each day.

### Attendance

We are working very hard to ensure that pupil attendance across our school returns to pre pandemic levels. **Please continue to work with us to ensure that your child attends school regularly**. It is **essential that we support our children to maintain good habits around attendance at school to ensure their future success**.

### Open Evening and Parent Evenings

It was **fantastic to welcome so many families to school for our Open Evening**. I have **led a large number of parent tours** during the school day and we are looking forward to **welcoming year 4 children to school** over the next half term to **take part in science and food lessons**. We have also **enjoyed welcoming 500 families to our parent evenings**. We hope that you found this opportunity to visit school useful and thank you for your continued partnership with us.

### Staffing Update

I am delighted to share with you news of the **safe arrival of Mrs James' baby at the end of September**. We are looking forward to welcoming Mrs James to school in the coming weeks. I am **sorry to share the news that Mr Moncaster will be leaving us at the end of this term**. Mr Moncaster is preparing to embark on exciting new challenges and he will be sorely missed on the Sports Field

where he has led clubs and teams with such dedication. We will be **advertising for a replacement for Mr Moncaster shortly**.

### Trips and visits

Our **Year 8 pupils have been busy signing up to participate in their Enrichment Week** that will take place in April. Children will either **visit London on a residential trip** or take part in a number of visits across this week as part of our non residential offer. Our **Year 5 children will be visiting Bristol for their residential trip in July** and our **Year 6 pupils are all visiting the Nothe Fort** this month to **support their learning in History and English lessons**. You can also find **details of our Careers programme** for our Year 7 and 8 pupils later in this Newsletter.

### School Improvement Works

I am pleased to share the news after a period of time without a site team, we will be forming a **partnership with QE School in the coming weeks, sharing a site team across our two schools**. This will ensure that we continue to improve and care for our school site. I am also delighted to be able to share the news that **we will be refurbishing all of our toilet facilities during this academic year**. I am sure that you will agree that this is exciting news and I look forward to sharing further details with families.

We plan to continue to repaint classrooms during the academic year and I am **excited to announce that the School Association have approved funding to install Wall Art** to support learning and improve our environment whilst **also funding Apple technology for use by all children in our Music department**.

And finally, our **School Association will be hosting a Disco on Thursday 16th November** and this will be followed by a **non uniform day raising funds for Children in Need on Friday 17th November**. Further details will be shared shortly.

Kind regards

**Mr M. Legge - Headteacher**

### Our School Values - Apsire@AMS

**Our school's values** underpin much of the work that we do in school and we regularly discuss these with the children making **links to their learning journey with us at Allenbourn Middle**. Our aim is to focus upon the three key areas above: **Academic Excellence, All Inclusive** and **Responsible Individuals** as we **aspire together @ AMS**.



### Our Pupil Parliament 2023 - 2024

You will remember that we shared the news of the appointment of our Senior Pupils in our September newsletter. Both **Madi F and Elliott T** spoke superbly at our recent Open Evening and welcomed visitors to our school alongside our Senior Pupil Committee: **Megan C, Adelina R-F, Aidan M, Esme A, Lila H, Jaya M, Poppy D, Harry R, Oscar T**

Mr Stroud has started to support our Senior Pupils in dedicated time each week to ensure that our Pupil Parliament leads change across our school. Alongside school council representatives, so far this group have championed changes to lunchtime arrangements to include more active play and Senior Pupils will be leading a whole school assembly to raise awareness of Children in Need in a few weeks time.

### Sports Leaders

We have recently **appointed our Sports Leaders for this academic year**. This group will be learning and developing their roles and as leaders are expected to show good decision making and be role models to the other pupils. We are delighted to have awarded sports leader badges to the following pupils: **Elsie G, Elliot T, Darcey B-E, Isla S, Florence VDF, Poppy D, Megan C, Jacob G, Kayla R, Finn B, Freya M, Harry R, Lola F, Isabelle R, Ava D, Annabelle C, Oscar T, Josh E, Tegan S, Seren M, Jack B, Esme A**.

Headteacher: Mr M. Legge BEd (Hons) NPQH  
Deputy Headteacher: Mr L. Smith BA (Hons)

**Meet the Teaching Team** - This year we will introduce you to and tell you a little more about our staff team. In this newsletter we asked a couple of our new team members from last year to tell us a little more about themselves.

### **Mrs Henstridge Art Lead**

- *Before I joined AMS, I worked in Secondary schools in both Dorset and Hampshire teaching Art and specialising in Photography.*
- *When I was younger I wanted to have a career in the Film industry.*
- *In my spare time I make jewellery, illustrate and love to read a good book during the school holidays.*
- *This year, my husband and I have invested money in our house and have extended it - so lots of our time has been dedicated to building our family home.*
- *I love it here at Allenbourn - I have wanted to teach in a Middle school for a long time. I love the enthusiasm the pupils have for creativity and I aim to provide many opportunities for pupils to enrich their experiences of Art in school and beyond.*



### **Mr Magor Music Lead**

- *I have been involved in Music education to children, young people and adults for several years teaching instruments, performance and composition.*
- *I'm involved in Music outside of school as a performer, conductor and musical arranger.*
- *I look forward to bringing my musical skills to Allenbourn.*



### **Special Recognition Award Winners**

Last half term we celebrated the achievements of members of our school community in our whole school assembly each week. Below are the winners of this award for the first half of the Autumn Term.

- The children at AMS for an excellent start to the new academic year.
- **Mrs Hazell** - Has completed her **level 4 Mental Health Lead qualification**.
- **Eddie S in Year 5** for his **excellent homework** titled, 'A Good Allenbourn Student'.
- **Leiarra P** - **Winner of the Planet Wimborne Poster Competition** as part of the Green Festival
- **Jakob S in Year 7** for his **impressive racing success** and sharing his video with us.
- Our **Year 8 Sports Leaders**, who following their application **took part in Sports Leader Training at Bryanston**. *Details of our sports leaders are listed earlier in our newsletter.*





Headteacher: Mr M. Legge BEd (Hons) NPQH  
 Deputy Headteacher: Mr L. Smith BA (Hons)

## Child Protection

Our Designated Safeguarding Lead with responsibility for Child Protection is:

**Mr L. Smith** (pictured right)

The Academy Committee member with responsibility for Child Protection is:

**Mrs V. Gregg**

Our designated Teacher with responsibility for Looked after Children is: **Mrs P. Wheeler.**




Our Deputy Designated Safeguarding Leads with responsibility for Child Protection are:

**Mr M. Legge, Mrs P. Skipp** (pictured above), **Mr R. Wright, Mr C. Daw, and Mr C. Hickson.**


## Behaviour Expectations @AMS

We continue to **teach our children how to conduct themselves** as they **grow to be articulate and responsible young people**. We value our partnership with home and all of **our families' support to ensure that we work together to reinforce our behaviour expectations**. This will ensure that our school is the very best environment for our children to learn and grow in. Please take time to **review these expectations with your child** as we begin the new academic year. **A link to our behaviour procedures is also available below** (and on our school website) for you to review together.


Expectations	At All Times	In Classrooms	Playground	Lunchtime	Toilet
<b>We are here to learn</b>	<ul style="list-style-type: none"> <li>Focus on the learning.</li> <li>Be prepared for your next lesson.</li> <li>Put your equipment away safely so it is ready to use again when needed.</li> </ul>	<ul style="list-style-type: none"> <li>Arrive on time for lessons.</li> <li>Enter rooms quietly.</li> <li>Have the necessary equipment.</li> <li>Leave the room tidy.</li> <li>Respond appropriately to adult instructions.</li> </ul>	<ul style="list-style-type: none"> <li>Keep to your specified areas.</li> <li>Pay attention and follow adult instructions.</li> <li>Respond to signals that social time has ended.</li> <li>Return to lessons quickly and quietly.</li> </ul>	<ul style="list-style-type: none"> <li>Walk to tables.</li> <li>Stay seated at tables while eating.</li> <li>Queue quietly and respectfully.</li> </ul>	<ul style="list-style-type: none"> <li>Visit only at break times where possible.</li> <li>Spend as much time in the classroom as possible.</li> </ul>
<b>We are respectful and polite</b>	<ul style="list-style-type: none"> <li>Show courtesy to all.</li> <li>Be aware of your surroundings.</li> <li>Offer help where you can.</li> </ul>	<ul style="list-style-type: none"> <li>Respond to questions politely.</li> <li>Use appropriate voice register.</li> <li>Use inclusive and non-derogatory language.</li> <li>Raise your hand for attention.</li> </ul>	<ul style="list-style-type: none"> <li>Speak to everyone calmly and fairly.</li> <li>Use inclusive and non-derogatory language.</li> <li>Be welcoming.</li> </ul>	<ul style="list-style-type: none"> <li>Follow adult directions.</li> <li>Wait for your turn.</li> <li>Leave your space tidy and clean.</li> </ul>	<ul style="list-style-type: none"> <li>Put rubbish in bins.</li> <li>Flush the toilet.</li> <li>Respect the privacy of others.</li> <li>Do not damage the facilities.</li> </ul>
<b>We make the right choices</b>	<ul style="list-style-type: none"> <li>Join a club.</li> <li>Give your best.</li> <li>Attend regularly.</li> <li>Be punctual.</li> </ul>	<ul style="list-style-type: none"> <li>Look at who is speaking.</li> <li>Do not distract others.</li> <li>Respond appropriately to feedback.</li> <li>Attempt all tasks to the best of your ability.</li> </ul>	<ul style="list-style-type: none"> <li>Play fairly.</li> <li>Be tolerant of others.</li> <li>Follow game rules.</li> <li>Enjoy your social time.</li> <li>Take the opportunity to be physically active.</li> </ul>	<ul style="list-style-type: none"> <li>Use appropriate voice volume.</li> <li>Do not shout.</li> <li>Check you have what you need before sitting down.</li> </ul>	<ul style="list-style-type: none"> <li>Go, flush, wash and leave.</li> <li>Return to class promptly.</li> </ul>



01 Student Learning



02 Student Wellbeing






03 Student Leadership

We are here to learn

We are respectful and polite

We make the right choices

### [Allenbourn Middle School Behaviour Guidance](#)

Headteacher: Mr M. Legge BEd (Hons) NPQH  
Deputy Headteacher: Mr L. Smith BA (Hons)

### Tassomai - Did you Know?

We have recently been contacted by Tassomai as they have started measuring usage in three key areas across all of their schools across the country.

They have ranked each school in each key statistic for the period up to half term. I am delighted to be able to share with you that in **student engagement Allenbourn Middle School is ranked in the top 3%**; in teacher engagement we are ranked in the top 17% and in parent engagement in the top 27%. **Overall this places our school in the top 2 percent of all schools using Tassomai across the country** for the last half term. **Keep up the great work Year 7 and 8.**



**SPARX Maths** - Please make sure that your child is completing their weekly Maths Learning on Sparx. To build upon our success with Tassomai we are keen for all children in Year 7 and 8 to complete their weekly homework on Sparx. Engagement is much improved and this is checked and tracked weekly through our compliance checks. However we are keen to ensure that our engagement in Sparx Maths sits alongside the top performing Secondary schools Nationally.

### Weekly homework expectations at Key Stage 3 Your at a glance reminder

- **At least 5 daily goals on Tassomai** in English, Maths and Science
- **100% completion of their SPARX** assignments
- **5 entries in their Reading Log** and signed by you as parent/Carer.

**IMPORTANT:** Please ensure that **children do not bring nut or sesame seed based products into school**. Please also ensure that **children have a healthy snack** for break time each day and remind them of the **importance of reducing packaging and keeping our school tidy**.

### Uniform: A **BIG thank you** and reminders of expectations @AMS

A very big thank you to all of our families for the fantastic improvement in how our children arrive at school each day in their school uniform. This really has had a positive impact across our school. Please can I remind all parents to ensure that the following expectations for school uniform are consistently met by all pupils throughout this year.

- **Black school shoes must be worn. No trainers, slip on or high heeled shoes are permitted. children are not permitted to wear branded black trainers** at Allenbourn Middle School.
- **Skirts MUST be pleated** and should be **no more than two or three centimetres above the knee**. Trousers should not be tight fitting.
- Children can wear black tailored school shorts or trousers.

*Article 3: All organisations concerned with children should work towards what is best for each child.*

Headteacher: Mr M. Legge BEd (Hons) NPQH  
Deputy Headteacher: Mr L. Smith BA (Hons)

- Black or grey ankle/knee length socks or black or grey tights should be worn. Traditional school tights only are permitted.
- **White socks, trainer socks, sports leggings** and sheer tights are **not permitted**.
- Children should **not wear a hoodie including their school P.E. hoodie to school** or around our school site. Instead they should wear a school sweatshirt and/or a coat.
- Children are **not permitted to wear make-up or have any piercings** other than a single ear stud in each ear.
- Children should **not wear smart watches or similar devices** to school.
- Children should **not attend school with their hair coloured** or with any other extreme style.

Our uniform has been chosen with consideration of cost and accessibility for our families and we will continue to review this. Parents who are in receipt of free school meals may apply for a school clothing allowance. Parents wishing to claim this grant should contact the school office.

**Please ensure that all of your child's school belongings are named.**

**Did you Know?** We are making excellent progress with our journey to being assessed as a Rights Respecting School. We hope to share details of our assessment and what this involves in our next Newsletter.

**In the News** - A quick round up of school events from the last half term that you may have already spotted on Social Media.

Shortly before half term we **welcomed visitors from local businesses to support classes taking part in Dorset Coding Day**. The day was engaging, interactive and fun and hopefully inspired children about the potential of coding for their increasingly digital futures.



### School Sport

Our children have taken part in many football matches as the new season has commenced. Children have been taking part across all year groups and engagement in clubs has been fantastic to see. **Our teams have had a busy schedule of friendly, county and National Cup matches.**

The **Year 7 boys had a closely fought game against West Moors, pulling off a 5-4 win in the National Cup**. The **Year 8 girls won against Wey Valley at home, 5-4** and the **Year 8 boys had a fabulous 4-3 win over All Saints Academy away in the County Cup**. Many congratulations to all who have played in matches.





Headteacher: Mr M. Legge BEd (Hons) NPQH  
Deputy Headteacher: Mr L. Smith BA (Hons)

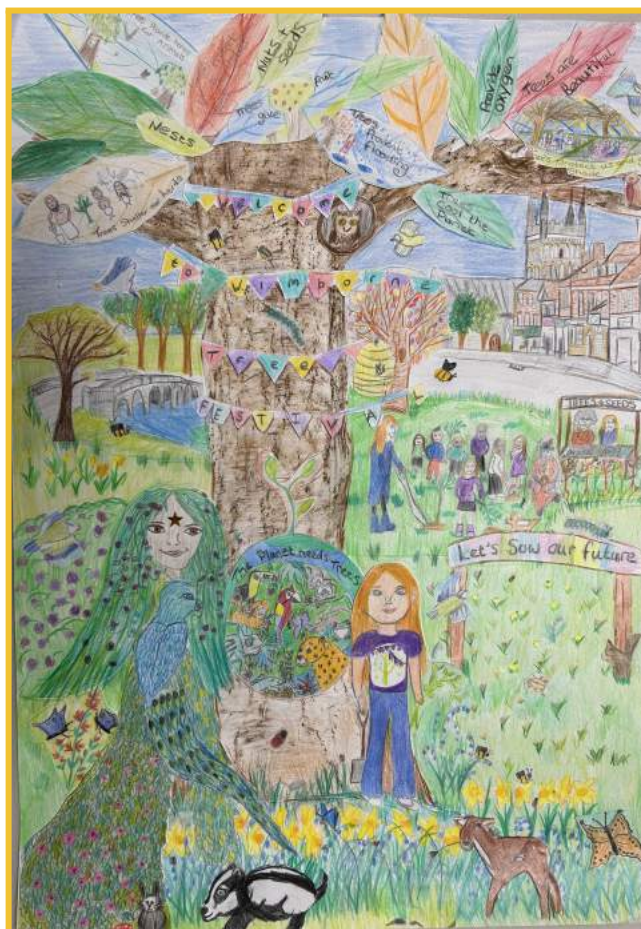
### Wimborne Food Bank

A very big thank you to all of our families who contributed to ensure that we could support Wimborne Food Bank as part of our Harvest Collection.



### Green Festival Art Competition

Well done to all our art students who took part in the Planet Wimborne Green Festival Poster Competition and a special congratulations to Leiarina in Year 6 for being one of a select group of winners! Her entry was fantastic (right)



### Cranborne Art Visit

21 very enthusiastic art pupils visited Cranborne to work with artist Jo Beal, and make their own sketchbooks, inspired by nature and archeology.

*Article 3: All organisations concerned with children should work towards what is best for each child.*



Headteacher: Mr M. Legge BEd (Hons) NPQH  
 Deputy Headteacher: Mr L. Smith BA (Hons)

**Anti Bullying week 2023** - We have reminded children in assembly this week about our whole school approach to ensuring that bullying does not happen at our school while reminding them that if inappropriate behaviour does take place that they should **feel confident to report it immediately** and be reassured that it will be addressed quickly with the appropriate support being put in place.

To support Anti-Bullying week we will be asking children to support **Odd Sock Day on Monday 13th November** as anti-bullying week begins.



### What is Odd Socks day?

Odd Socks Day is designed to be fun! It's an opportunity to encourage people to express themselves and celebrate their individuality and what makes us all unique! Odd Socks day will take place on the first day of Anti-Bullying Week each year to help raise awareness of bullying.

### Did you Know? Curriculum @ AMS

You can view our Curriculum Overview for each Year group on our school website by following the link below.

[Allenbourn Middle School Curriculum Maps 2023 - 2024](#)

Children will continue to participate in **whole class reading** and **use Accelerated Reader**. Children will complete STAR testing and **DEAR** (Drop Everything and Read) **sessions will be timetabled across the school week** for all children.

Please can you ensure that you continue to encourage and promote regular reading and engagement with Accelerated Reader from home.

Year 5						
Subject	Autumn 1	Autumn 2	Spring 1	Spring 2	Summer 1	Summer 2
English	Rain Player By David Wisniewski The Explorer By Katherine Rundell		The Magician's Nephew By C.S Lewis Jabberwocky By Lewis Carroll		Hidden Figures By Margot Lee Shetterly Who Let the Gods Out? By Miu Evans	
Maths	Place Value: Numbers to 1,000,000	Four Number Operations: Add, subtract, multiply and divide	Fractions, Decimals and Percentages	Fractions, Decimals and Percentages Geometry Properties of shape	Measurement: Converting units of measure Area and Perimeter	Measurement: Volume Roman Numerals
Science	Properties & Changes of Materials	Properties & Changes of Materials	Living Things and their Habitats	Forces: Friction and resistance	Earth and Space	Animals including Humans
Art	Food & drink: Introduction to the Elements of Art Observational compositional drawing Observational painting inspired by chosen artists		South American Animals Observational drawing & material investigations Mixed-media animal piece and clay animal sculpture		Portraiture Observational self-portrait drawing Printmaking	
Computing	Introduction to Systems	Scratch	Spide	Spreadsheets	Logic	Hardware & History

### The Essential AMS Pupil Equipment List

Please ensure that your child attends school with the correct equipment each day. Below is a **quick reminder of the items that they need for each day:**

*A handwriting pen with blue ink (including a spare), a pencil case, a pencil, a pencil sharpener, a clear plastic 30m ruler, an eraser, A glue stick, a board pen, a set of colouring pencils, a purple, pink and green biro and a highlighter.*

Headteacher: Mr M. Legge BEd (Hons) NPQH  
Deputy Headteacher: Mr L. Smith BA (Hons)

---

## Pupil Safety

We regularly talk with the children about the importance of travelling to and from school safely. Please discuss the following with your children regularly to ensure their safety.

- **Behaviour should be of a high standard at all times.**
- Pupils should not use mobile phones whilst walking to school, particularly when crossing roads.
- Pupils must remain on pavements at all times and walk with care and consideration for others.
- Pupils using scooters or bikes should take care around other road users and those on pavements.
- **Helmets should be worn on bicycles and scooters.**

---

## Key Dates 2023 - 2024

### Autumn Term 2023

Flu Vaccinations	<b>Tuesday 21st November</b>
Last Day of Term for Pupils	<b>Thursday 14th December</b>
Staff Training Day	<b>Friday 15th December</b>

### Spring Term 2024

Staff Training Day	<b>Tuesday 2nd January</b>
First Day of Term for Pupils	<b>Wednesday 3rd January</b>
Half Term Holiday	<b>Monday 12th February - Friday 16th February</b>
Staff Training Day	<b>Monday 19th February</b>
Pupils Return	<b>Tuesday 20th February</b>
Last Day of Term for Pupils	<b>Wednesday 27th March</b>
Staff Training Day	<b>Thursday 28th March</b>

### Summer Term 2024

First Day of Term for Pupils	<b>Monday 15th April</b>
Year 8 Enrichment Week Including London Residential	<b>Monday 29th April</b>

***Article 3:** All organisations concerned with children should work towards what is best for each child.*

Headteacher: Mr M. Legge BEd (Hons) NPQH  
Deputy Headteacher: Mr L. Smith BA (Hons)

---

May Day Holiday	<b>Monday 6th May</b>
Year 6 SATs Week	<b>Monday 13th May - Thursday 16th May</b>
Half Term Holiday	<b>Monday 27th May - Friday 31st May</b>
Pupils Return	<b>Monday 3rd June</b>
Last Day of Term	<b>Tuesday 23rd July</b>

---

### Arriving at School Each Day

- **Children are permitted to enter school via either of our two gates regardless of the year group that they are in.**
  - Please can we remind you that **children should not arrive at school before 8:30am when our school opens.** Staff are on duty each day from this time. All children should go to the playground if they arrive at school before this time.
  - When bringing children to school, please ensure that your child comes straight into school.
  - Children walking to school should avoid crossing the Allendale Car Park where possible.
- 

### Class Charts Rewards - Live for 2023 - 2024

In our whole school assembly in the week before half term we launched with the children, the 2023-2024 Reward Shop on Class Charts. This follows on from a successful pilot reward shop that was trialled in the summer term. We have taken feedback from children and staff, and we are pleased to say that it is even bigger and better with more rewards on offer!

Please take the time to sit with your child(ren) and look through what is on offer this year as there are a variety of exciting opportunities for the children to put themselves forward for. Each reward has a points value and this is how many of the children's positive reward points will be used to purchase that reward.

Rewards have been planned to take place throughout the school year and to appeal to different pupils. There are some sessions taking place before Christmas, so please have a look through all of the options in the Reward Shop so that you don't miss out! This also gives your child time to earn more spendable reward points.

If you have any questions about the reward system, please contact your child's tutor in the first instance.